

# SPECIAL WEIGHT LOSS ALERT

## LIFE AND DEATH BEGIN IN THE COLON

By: **EILEEN SILVA**  
*Metabolic Weight Control Specialist*

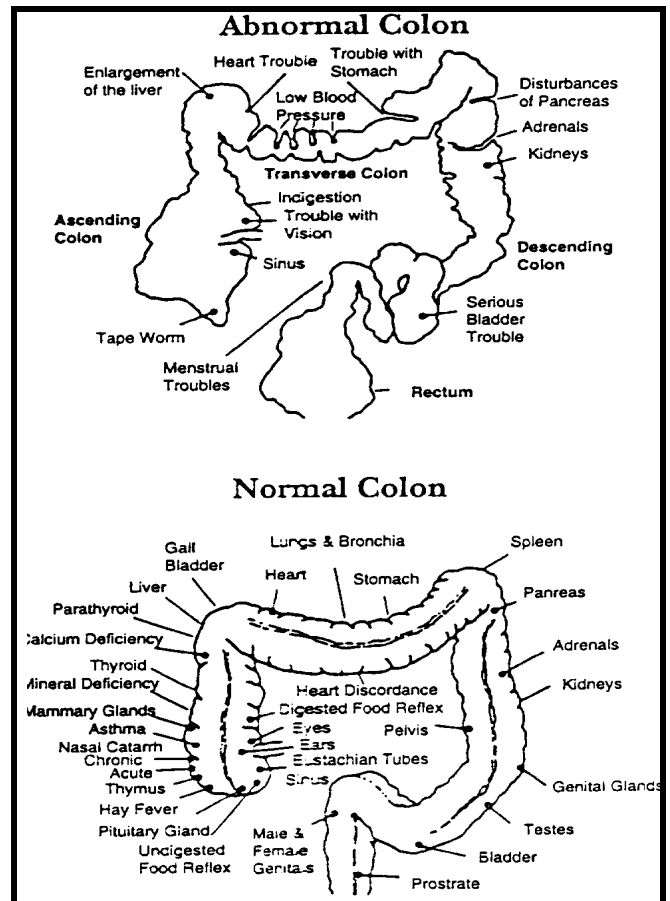
*Eileen Silva is a metabolic health balancing expert who has appeared on TV and radio talk shows coast to coast, lectured extensively and does individual and group weight management consultations, as well as corporate wellness programs. Her best-selling new release **Fat Chance At Last!---How to Go Beyond Willpower...** joins her other deluxe tape album series 1&2 as well as her unique breakthrough technology, a colored bar graph computerized body analysis, **Body Fitness Profile**. Thousands of clients across the United State have greatly enhanced energy, well-being, weight balance and longevity with Eileen's customized body analysis and wellness coaching.*

This might surprise you, but the average person who is neither overweight nor noticeably allergic to things is carrying around 7-25 pounds of dried fecal matter in the system. Overweight and allergic people may be harboring a lot more than that! The toxins from this accumulated waste matter are responsible for many body imbalances which may create weight health problems.

As a matter of fact, one of the most common complaints that women have about their figures is a potbelly, a classic sign of colon toxicity and very simple to correct with an improved health regimen. A distended abdomen is sign of a more serious colon problem and is often a fecal ball which gathers more and more coatings the longer it goes unaddressed.

Virtually all weight challenges can be traced to imbalances in the colon/digestive tract as either a primary contributor or a secondary problem which accentuates slowdowns in other critical body systems like the endocrine (glandular) system and the circulatory system.

A round robin domino effect is then set into motion. A toxic colon contributes to a toxic circulatory system and soon the body is simply not able to metabolize food and fat properly and provide energy for vitality in living.



Isn't it amazing to realize that colon toxicity, with the walls of the intestine and colon lined with mucus derived from undigested and uneliminated food substances, along with toxins from medicines, preservatives, water, and even the air you breathe could be responsible for your being tired?

A 54 year old woman in Atlanta, Georgia recently discovered during a colonic (professional colon irrigation) that her body still had a residue of barium which she was only given once when she was 7 years old...47 years earlier. Such coatings can block proper digestion, nutrient absorption and waste elimination which provides an excellent breeding ground for germs and parasites.

Some symptoms of parasites can include restless sleeping, fatigue, poor assimilation and absorption of nutrients, food cravings, especially sugars and breads, as well as an inability to feel satisfied after a large meal.

“Regularity” in bowel habits really means a bowel movement after every meal---something almost non-existent in our McDonald's™ generation. And for those who have frequent diarrhea, diarrhea is just as strong an indicator of colon toxicity as constipation.

If you or anyone in your family has any of the symptoms described in this SPECIAL WEIGHT LOSS ALERT, please contact the person who shared it with you and ask about a cleansing regimen with **Reneu™**, which will remove the accumulated mucous and hardened waste matter and help reverse the toxic cycle.

Using **Reneu™** is so simple...and with 49 cleansing herbs and fibers it is the most comprehensive and cost-effective colon intestinal cleanse available in today's market. It's all natural, safe, easy to use and it tastes good!

Do not ignore these warning signs of serious body imbalance. Give yourself a fresh new life of fitness and vitality today. Life and death truly do begin in proper colon health.

For More Information Contact:

**HEGAN CENTER**

501 San Juan Dr., Suite “P”  
SOUTHLAKE, TX 76092

**(817) 4245204**

[www.EileenSilva.com](http://www.EileenSilva.com) & E-mail [ensilva@aol.com](mailto:ensilva@aol.com)